

Tuesday, 1 October 2013

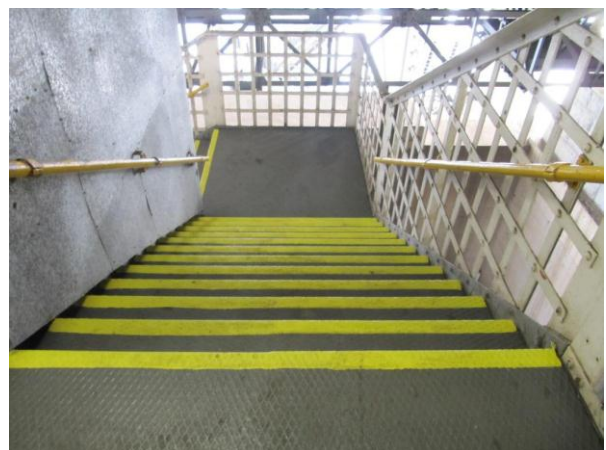
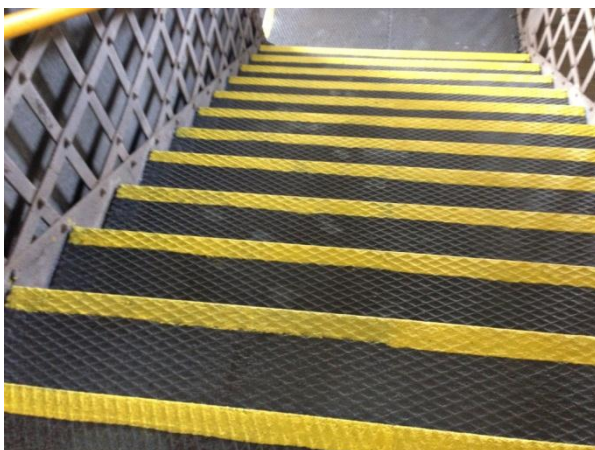
"As part of the maintenance to the bridge and maintaining safe access within the structure we painted the steel checkerplate treads and landings of the main access stair tower in a non-slip epoxy paint and were looking for a suitable non-slip, lead-free paint available in a bright yellow as a replacement to the traditional hazard yellow paints which contain lead, to paint the edges of the treads,

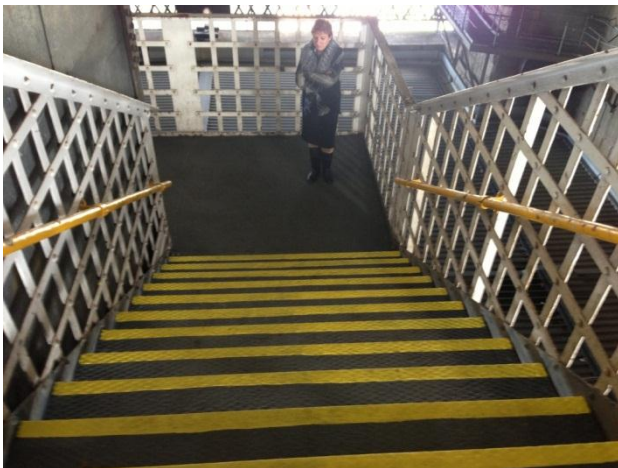
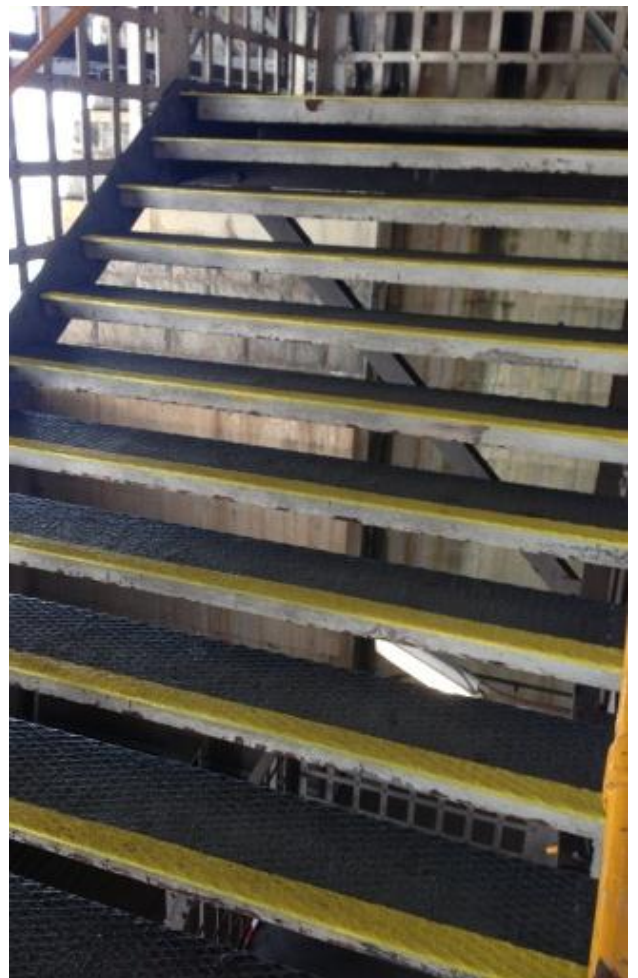
Greg Gurd from Cyndan introduced me to Tuf Stuf as a suitable option.

Tuf Stuf was simple to prepare and apply - just stir and paint, with a few intermittent stirs to ensure the grit is thoroughly mixed to ensure maximum grip when dry. The great advantage of Tuf Stuf is the absence of harmful chemicals meant that only basic PPE is required and it could be applied without the need for a full negative pressure containment system of an air fed hood.

The Tuf Stuf painted on the edge of the stair treads has been subject to foot traffic for approximately six months and has held up quite well in both grip and appearance".

Ray Daly
Project Engineer (Mechanical)
Sydney Harbour Bridge Alliance
Sydney Road Services | Road & Fleet Services
www.rms.nsw.gov.au





AUSTRALIA

NEW ZEALAND

CHINA

USA

MEXICO

QATAR

UAE

INDONESIA

A Unit 1, 1 Prosperity Parade, NSW 2102 Australia
Free Phone 1800 812 309 | P +61 2 9998 5688 | F +61 2 9999 2086
ABN 31 001 670 097 | www.cyndan.com.au